



Case study

Arqiva

Client

Arqiva

Requirement

Fast, efficient servicing and maintenance of telecoms masts and towers

Solution

Vertical fall protection system

Product details

ManSafe® Vertical Cable system with LadderLatch™ device



Safer servicing of
masts and towers

Background

Arqiva provides much of the infrastructure behind television, radio, satellite and wireless communications in the UK. In fact, 98.5% of the UK population enjoys its TV services.

Major broadcasters, such as the BBC, ITV and BSkyB, as well as independent radio groups, depend on Arqiva to keep connected to their customers. It also provides the connectivity for leading UK mobile network operators and many emergency services operators. Arqiva distributes content and data to homes across the length and breadth of the UK, as well as having a presence in Ireland, mainland Europe, USA and further afield.

Much of Arqiva's infrastructure consists of towers and masts, which are either freestanding or sited on the top of buildings. Fixed and mobile telecommunications carriers and operators across the UK use these installations to connect their end users to essential data and voice networks.

The Requirement

Over the next few years Arqiva plans to build hundreds of new structures to meet increasing national demand, as well as maintaining an existing portfolio of around 16,000 sites.

Fast and efficient servicing and maintenance of the masts and towers is key to Arqiva's continuing success. Maintenance routines are carried out regularly and include stay tensioning, stay greasing, painting, lift maintenance, repairs and capital enhancement projects. Every site requires access and given the nature of the structures, fall protection is critical.

Arqiva felt their previous solution for safe worker access could be improved upon, which led them to seek tenders for an even safer and more reliable replacement system. As Dan Hobbs, Customer Delivery Manager, Mast Maintenance and Capital Works, Arqiva, says: "A core aspect of our operations is to ensure the structural integrity, reliability and serviceability of every installation in accordance with legislation, codes of practice and established guidelines. To do this we rely heavily on our fall protection systems. We need to be able to trust their performance and, ideally, not use systems that require heavy maintenance themselves."

Latchways already had an established reputation within the telecommunications industry, having provided vertical system solutions for organisations including AT&T, NTL, Orange, Deutsche Telekom and Vodafone. This prompted Arqiva to contact Latchways to talk about its requirement in detail.





The Latchways Solution

Arqiva's main considerations were that the system had to be:

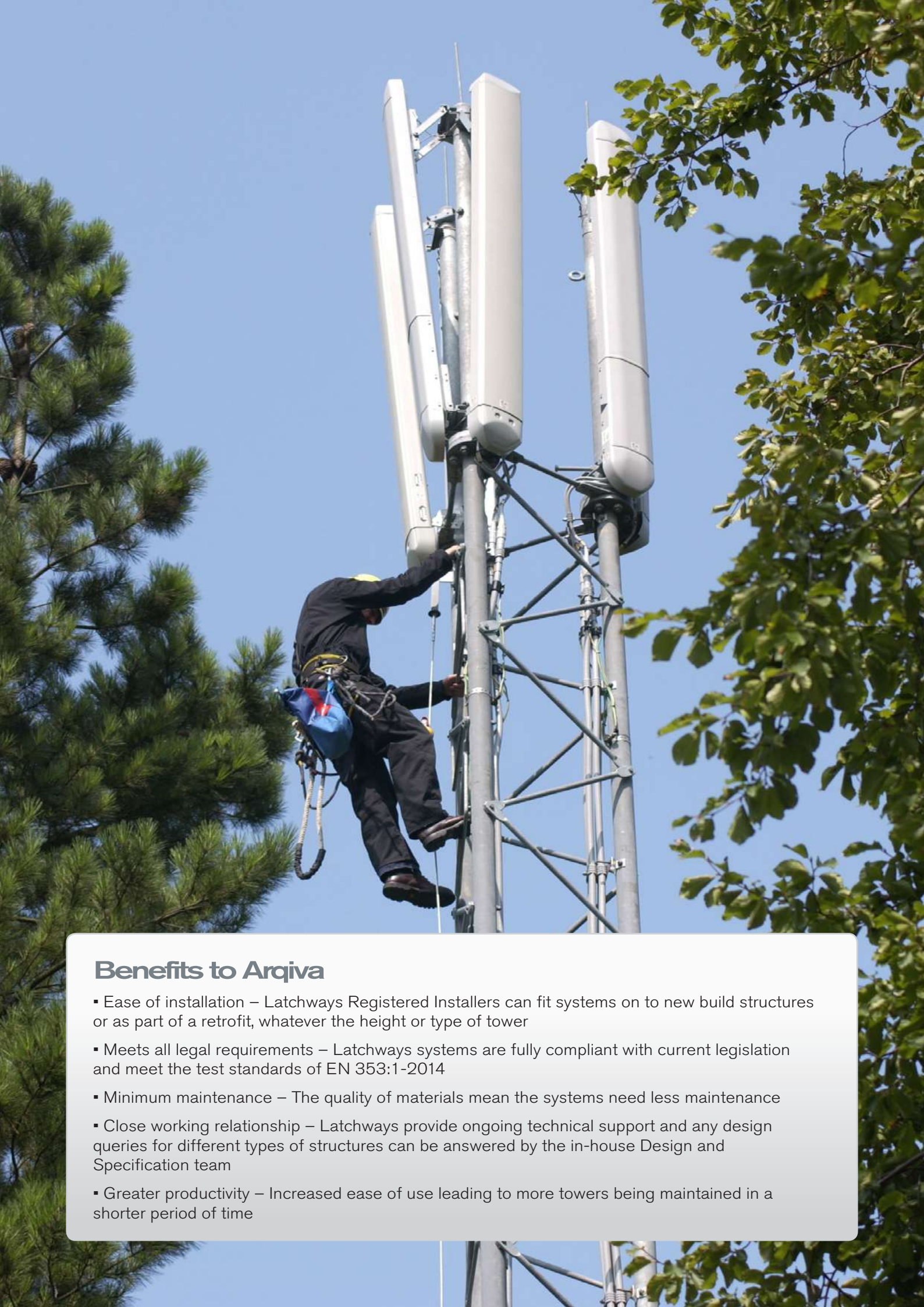
- Safer than their existing solution
- Easily retrofitted to any contour
- Easy to maintain
- Easy to use

Latchways' ManSafe® vertical cable-based systems fit these requirements perfectly, and it were chosen by Arqiva as their fall protection replacement.

Central to this system is Latchways' LadderLatch™ attachment device, which is uniquely designed to travel smoothly over intermediate supports, enabling users to keep both hands free while working. In the event of a fall, the LadderLatch™ unit immediately locks onto the cable system and arrests the fall. Within the telecommunications industry the Latchways ManSafe® system has now become a popular alternative to hooped ladders, which the UK Health and Safety Executive (HSE) warns (in Safety Notice CCID 1-2012) "may not be effective in safely arresting a fall without injur [and] do not provide positive fall arrest capability."


Every new structure that Arqiva erects is now being fitted with Latchways' equipment. Arqiva has also implemented a programme to retrofit the system to existing structures—typically between 16 m and 19 m in length and installed on t-spines.

The company now views Latchways fall protection systems as an integral element of its installation strategy. So much so, it has made it mandatory for specialist subcontractors to incorporate them into the design and manufacture of its telecommunications structures.



Benefits to Arqiva

- Ease of installation – Latchways Registered Installers can fit systems on to new build structures or as part of a retrofit, whatever the height or type of tower
- Meets all legal requirements – Latchways systems are fully compliant with current legislation and meet the test standards of EN 353:1-2014
- Minimum maintenance – The quality of materials mean the systems need less maintenance
- Close working relationship – Latchways provide ongoing technical support and any design queries for different types of structures can be answered by the in-house Design and Specification team
- Greater productivity – Increased ease of use leading to more towers being maintained in a shorter period of time



“Latchways has more than taken care of our need to keep our workers safe at height. The ‘more’ comes in the extreme ease of use and rapid installation of their vertical systems. Our maintenance tasks have to be rigorous but they also have to be completed quickly. The Latchways kit enables us to get the job done fast; and that makes a noteworthy contribution to keeping our operational expenditure within fixed guidelines.”

Dan Hobbs, Customer Delivery Manager - Mast Maintenance and Capital Works, Arqiva

About Latchways

All around the world, people work safely at height thanks to Latchways' fall protection systems. With over 40 years of experience at the cutting edge of fall protection Latchways set the standard for innovation, performance and quality. Latchways are trusted to ensure worker safety on a wide range of buildings and structures, as well as throughout industries such as aerospace, oil and gas, and energy and utilities.



All the images included are representative of Latchways' ManSafe Vertical cable systems only and do not necessarily depict Arqiva structures

ManSafe® is a Registered Trademark, and LadderLatch™ is a Trademark of Latchways plc

Latchways plc, Hopton Park, Devizes, Wiltshire, SN10 2JP, England

Tel: +44 (0)1380 732700 Fax: +44 (0)1380 732701

Email: info@latchways.com Website: www.latchways.com